

Birdie

LIBS ELLIOTT



When Sparks Fly Quilt designed by: **Libs Elliott**

Quilt Size: **68" x 68"** • Skill Level: **Intermediate**



Free Pattern Download Available

1384 Broadway, 24th Floor, New York, NY 10018

Tel. (800) 223-5678 • andoverfabrics.com

9/15/23

When Sparks Fly

Introducing Andover Fabrics new collection: **Birdie** by Libs Elliott • Quilt designed by Libs Elliott

Quilt finishes 68" x 68"
24 Flying Geese Blocks: 6" x 12"
1 Center Star Block 24" x 24"

An unusual mixture of florals, geometrics, and stars makes this visually striking wall quilt. The dynamic design carries the eye in and out of the quilt center. Strip-piecing and other quick techniques make easy work of the various components.

Fabric Requirements

		Yardage	Fabric			Yardage	Fabric
Fabric A	star	fat ¼	1132-K	Fabric N	set	fat ¼	1136-O
Fabric B	set	fat ¼	1132-L	Fabric O	set	fat ¼	1136-P
Fabric C	set	fat ¼	1133-B	Fabric P	set	¼ yard	1137-B
Fabric D	set	fat ⅛	1133-O	Fabric Q	set	fat ¼	1137-O
Fabric E	sashes	1 yard	1133-P	Fabric R	sashes	1 yard	1137-P
Fabric F	set	fat ⅛	1134-E	Fabric S	set	fat ¼	1138-B
Fabric G	star	fat ¼	1134-K	Fabric T	set	fat ¼	1138-P
Fabric H	set	½ yard	1134-L	Fabric U	set	½ yard	1138-Y
Fabric I	set	½ yard	1134-Y	Fabric V	set	fat ¼	1139-B
Fabric J	set	fat ¼	1135-B	Fabric W	set	⅝ yard	1139-L
Fabric K	set	¼ yard	1135-E	Fabric X	set	fat ¼	1139-O
Fabric L	set	½ yard	1135-O	Binding		⅝ yard	1139-B
Fabric M	set	fat ⅛	1136-B	Backing		4½ yards	1137-B

Cutting Directions

Note: Read assembly directions before cutting patches. All measurements are cut sizes and include ¼" seam allowances. A fat ⅛ is a 9" x 20"-22" cut of fabric. A fat ¼ is an 18" x 20"-22" cut. Sash measurements include extra length for insurance. WOF designates the width of fabric from selvedge to selvedge (approximately 42" wide).

Fabric A

Cut (1) square 12½" for center star

Fabric E

Cut (4) sashes 6¼" x 32" (measurement is extra long for ease of construction)

Cut (2) squares 6⅞", cut in half diagonally to make 4 half-square triangles

Fabric G

Cut (4) squares 6⅞", cut in half diagonally to make 8 half-square triangles

Fabric H

Cut (12) squares 6⅞", cut in half diagonally to make 24 half-square triangles

Fabric I

Cut (1) square 13¼", cut in half diagonally twice to make 4 quarter-square triangles

Cut (16) strips 2" x 12½" for striped units

Fabric L

Cut (1) square 13¼", cut in half diagonally twice to make 4 quarter-square triangles

Cut (8) strips 2" x 12½" for striped units

Fabric N

Cut (1) square 13¼", cut in half diagonally twice to make 4 quarter-square triangles

When Sparks Fly

Fabric Q

Cut (1) square 13¼", cut in half diagonally twice to make 4 quarter-square triangles

Fabric R

Cut (4) sashes 6½" x 32" (measurement is extra long for ease of construction)

Cut (2) squares 6⅞", cut in half diagonally to make 4 half-square triangles

Fabric U

Cut (2) squares 9¾", cut in half diagonally to make 4 half-square triangles

Cut (8) strips 2" x 12½" for striped units

Fabric W

Cut (1) square 13¼", cut in half diagonally twice to make 4 quarter-square triangles

Cut (8) squares 6⅞", cut in half diagonally to make 16 half-square triangles

Fabric X

Cut (1) square 13¼", cut in half diagonally twice to make 4 quarter-square triangles

Cut (4) strips 2" x 12½" for striped units

Fabrics B, C, J, O S, T, V From each:

Cut (8) strips 2" x 12½" for striped units

Fabrics D, F, M From each:

Cut (4) strips 2" x 12½" for striped units

Fabrics K, P From each:

Cut (12) strips 2" x 12½" for striped units

Binding Cut (7) strips 2½" x WOF for binding

Backing Cut (2) lengths 39" x 78", pieced to fit quilt top with overlap on all sides

Making the Quilt

- Star Block** The block uses half-square triangles in the corners. Referring to Diagram 1, join Fabric E and Fabric R triangles to make 4 pieced squares (HST). Set aside.
- Star Flying Geese** The flying geese will be easier to piece if you first mark the sewing lines on the wrong side of the half-square and quarter-square triangle patches. Sew Fabric G triangles to the short sides of a Fabric W triangle, matching sewing lines (Diagram 2). The unit should measure 6½" x 12½". Make 4 Star Flying Geese like this.
- Join 4 HST, 4 Star Flying Geese, and the Fabric A square to make the Star Block (Diagram 3). Be sure to rotate the patches as shown to make the star design. Set aside.
- Flying Geese Units** Referring to Step 2, make 4 Flying Geese in each of the 5 fabric combinations shown in Diagram 4. The Flying Geese should measure 6½" x 12½". Join 5 Flying Geese in the order shown to make a unit. Stitch a Fabric U quarter-square triangle to one end as shown. Make 4 flying Geese Units alike. Set aside.

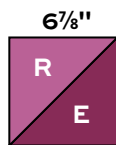


Diagram 1
HST- Make 4

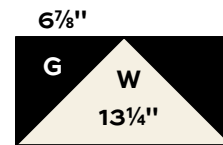


Diagram 2
Star Flying Geese
Make 4

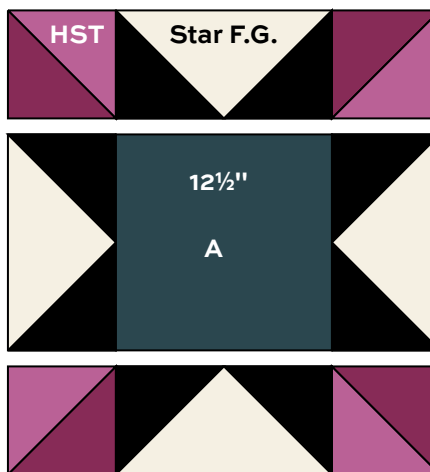


Diagram 3 – Star Block

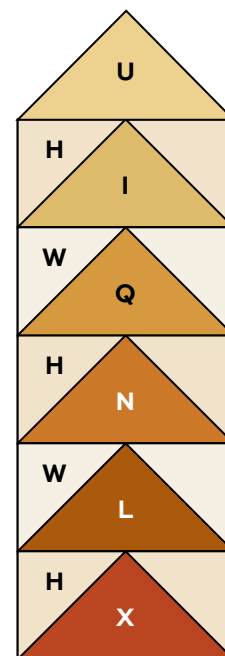


Diagram 4
Flying Geese Unit
Make 4

When Sparks Fly

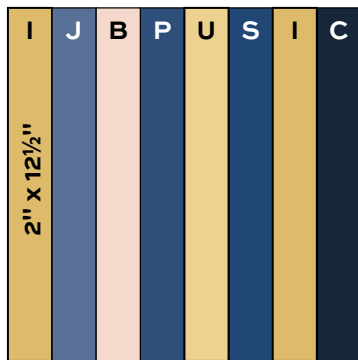
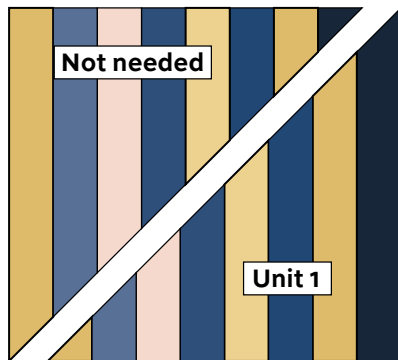


Diagram 5 – Make 4



5. **Striped Units 1-4** Arrange and join the 8 fabric 2" x 12½" strips needed for Unit 1 in the order shown in Diagram 5. Make 4 alike. Press seam allowances in all 4 units toward the left. Cut in half diagonally as shown. It is important that you keep the units oriented correctly while cutting. Label the pieced triangles #1 as indicated. Set aside the triangles labeled "not needed" for a future project.

6. Referring to Diagram 6, repeat these steps with 8 different strips to make 4 Unit 2. Press seam allowances toward the left as you did for Unit 1. Cut the Unit 2s diagonally in the direction shown. Label the pieced triangles #2. Set aside those not needed.

7. Repeat Step 5 to make 4 Unit 3 (Diagram 7). Press seam allowances as you did for Units 1 and 2. Cut diagonally in the direction shown. Label #3 and set aside those not needed. Likewise, make 4 Unit 4 (Diagram 8). Press toward the left. Cut diagonally in the direction shown. Label #4 and set aside those not needed.

8. **Side Units** Referring to the Side Unit diagram, position one of each kind of unit to make a large triangle. Make sure that the seam allowances are pressed in opposite directions where Units 1 and 4 meet so the seam allowances will "butt" into each other. Join the units together. Make 4 Side Units alike. Stay stitch near the edge of the long sides to prevent stretching the bias edges.

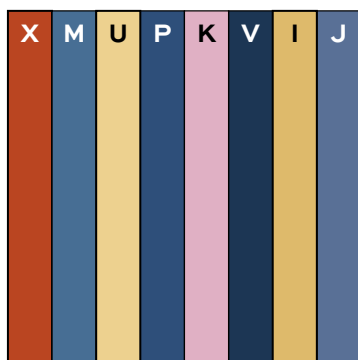


Diagram 6 – Make 4

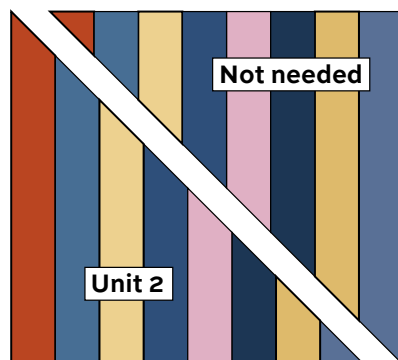


Diagram 7 – Make 4

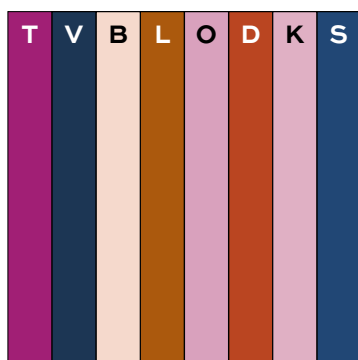
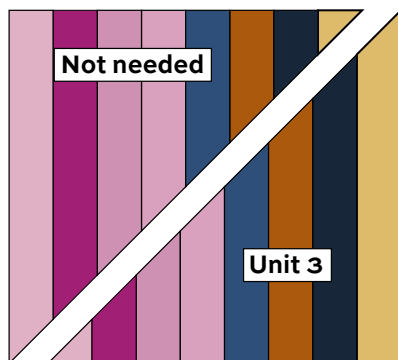
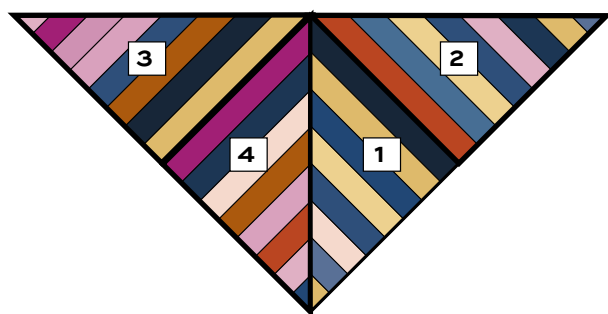
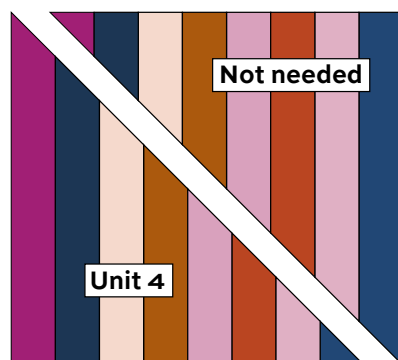


Diagram 8 – Make 4



Side Unit – Make 4

When Sparks Fly

9. Referring to the quilt Assembly, on a flat surface or design board, arrange the Flying Geese Units, Side Units, the Star Block, and Fabric E and R sashes as shown. The sash ends will be trimmed later. Join the blocks, units, and sashes in diagonal rows. Join the rows. Trim the ends of the sashes even with the sides of the quilt.

Finishing the Quilt

10. Layer the quilt with batting and backing and baste. Quilt in the ditch around sashes and patches. Quilt inside larger patches as you wish. Bind to finish the quilt.



Quilt Assembly

Birdie LIBS ELLIOTT



1132-K



1132-L



1133-B



1133-O



1133-P



1135-B



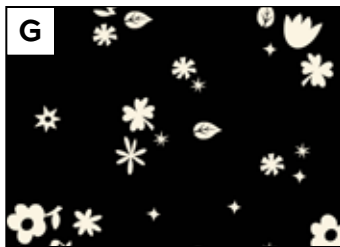
1135-E



1135-O



1134-E



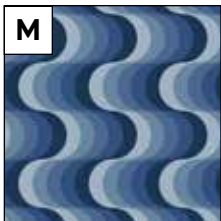
1134-K



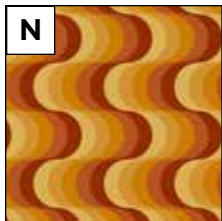
1134-L



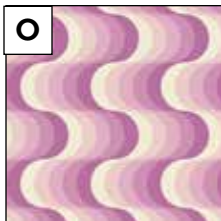
1134-Y



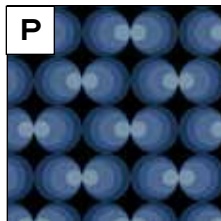
1136-B



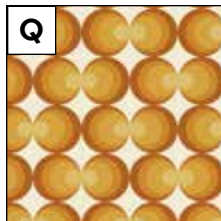
1136-O



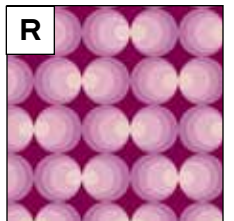
1136-P



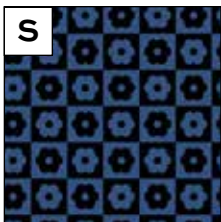
1137-B



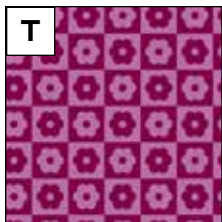
1137-O



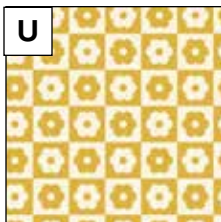
1137-P



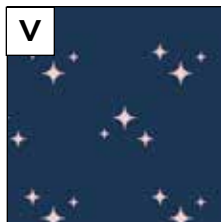
1138-B



1138-P



1138-Y



1139-B



1139-L



1139-O

All fabrics are used in quilt pattern. Fabrics shown are 25% of actual size.

Free Pattern Download Available

1384 Broadway, 24th Floor, New York, NY 10018

Tel. (800) 223-5678 • andoverfabrics.com